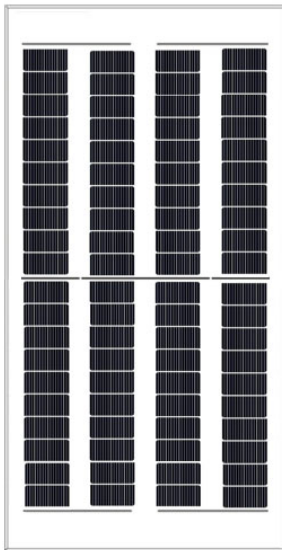


HT40-18X(ND)-F

Double Glass PERC PV Module

HIGH High power

HT40-18X(ND)-F
310W/315W/320W/325W/330W



- Module Efficiency: 12.8%
- No. of Cells: 80(4×20)
- Weight: 32.5(±0.5)kg
- Dimensions: 2278×1134×30mm
- Light transmittance: 46%
- For Australia market



MULTIWAY+

Shanghai Aerospace Automobile Electromechanical Co., Ltd.
 Website: www.ht-saae.com.au
 Address: 222 Caoxi Rd, the 8th Floor of Spaceflight Building, Shanghai P.R. China

Made in China



Half cut cell technology can reduce the internal power loss and improve module overall power. Excellent heat dissipation avoids hot spot production.

15/30Ys

Product warranty
 15Yrs for ground mounted
 30Yrs for rooftop

30Ys

Warranty on power output

EL

Microcrack resistant double glass structure enhance reliability, double EL tested of high quality control.



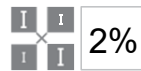
Entire module certified to with stand extreme wind(2400 Pa) and snow loads (5400 Pa)

TOPCon

Double glass, The optimized number and width of main gate lines, Maximize the light receiving area of modules and Reduce module power consumption.



Designed for high voltage systems of up to 1500 VDC, increasing the string length of solar systems and saving on BoS costs.



All the modules are sorted and packaged by amperage, reducing mismatch losses and maximizing system output.

0~+3%

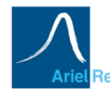
Power sorting tolerance
 0~+3% guaranteed

Anti PID

PID resistant
 (available on request)

Comprehensive and first-rate certification system

IEC 61215:2021, IEC 61730:2023 Latest Standard
 SA 8000, ISO 9001, ISO 14001 and ISO 45001
 meeting the highest international standards
 Strict quality control



HT40-18X(ND)-F-310W/315W/320W/325W/330W

Electrical Characteristics (STC)

Module Type	HT40-18X(ND)-F				
Maximum Power(Pmax)	310W	315W	320W	325W	330W
Open Circuit Voltage(Voc)	27.8V	28.0V	28.1V	28.2V	28.4V
Short Circuit Current(Isc)	14.16A	14.26A	14.42A	14.58A	14.68A
Maximum Power Voltage(Vmp)	23.2V	23.4V	23.5V	23.6V	23.8V
Maximum Power Current(Imp)	13.37A	13.47A	13.63A	13.79A	13.88A
Module Efficiency	12.0%	12.2%	12.4%	12.6%	12.8%
Power/Voc/Isc Measurement Tolerances	±3%/±5%/±5%				
Maximum System Voltage	1500V DC(IEC)				
Maximum Series Fuse Rating	30A				
Operating Temperature	-40°C to +85°C				

* STC: AM 1.5, Irradiance 1000W/m², module temperature 25°C

Electrical Characteristics (NMOT)

Module Type	HT40-18X(ND)-F				
Maximum Power(Pmax)	236W	240W	243W	247W	251W
Open Circuit Voltage(Voc)	26.7V	26.9V	27.0V	27.1V	27.3V
Short Circuit Current(Isc)	11.41A	11.49A	11.62A	11.75A	11.83A
Maximum Power Voltage(Vmp)	22.3V	22.5V	22.6V	22.7V	22.8V
Maximum Power Current(Imp)	10.58A	10.67A	10.75A	10.88A	11.01A

* NMOT: Irradiance 800W/m², ambient temperature 20°C, wind speed 1m/s

Bifacial NamePlate Irradiance(BNPI)

Maximum Power(Pmax)	341W	347W	353W	358W	364W
Open Circuit Voltage(Voc)	27.8V	28.0V	28.1V	28.2V	28.4V
Short Circuit Current(Isc)	15.58A	15.69A	15.86A	16.04A	16.15A
Maximum Power Voltage(Vmp)	23.2V	23.4V	23.5V	23.6V	23.8V
Maximum Power Current(Imp)	14.70A	14.83A	15.02A	15.17A	15.29A

* BNPI:front 1000W/m²,rear 135W/m²

Nominal Module Operating Temperature(NMOT) 43±2°C

Temperature Coefficient of Pmax γ (Pm) -0.31%/°C

Temperature Coefficient of Voc β (Voc) -0.25%/°C

Temperature Coefficient of Isc α (Isc) 0.046%/°C

Solar Cells Monocrystalline

No. of Cells 80 (4×20)

Dimensions 2278×1134×30mm

Weight 32.5(±0.5)kg

Glass (Front /Back) High transmission coated tempered glass/Heat strengthened glass

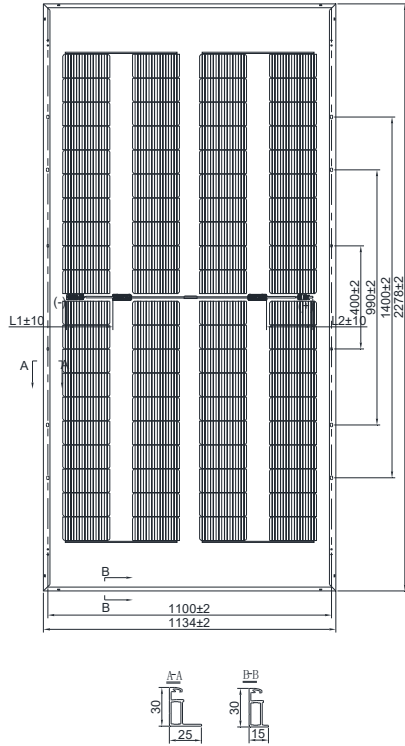
Frame Anodized aluminum alloy

Junction Box/Connectors IP68/PV-HT005-1
Shanghai Aerospace Automobile Electromechanical Co., Ltd.

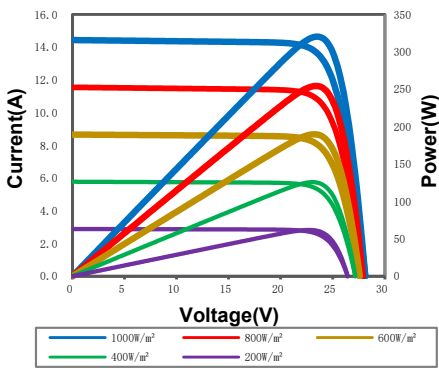
Cable 4mm² (IEC) Length: (+) 400mm, (-) 300mm or customized

Fire Rating Class C

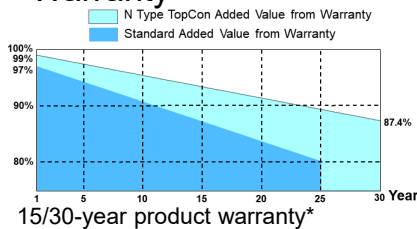
Packaging Configuration 36 pcs/box: 720 pcs/ 40' HQ Container



IV Curves



Warranty



15/30-year product warranty*

30-year warranty on power output*

* Specific information is referred to the product quality guarantee

*The module recycling should be carried out by the professional institutions at the end of module life cycle

*Copyright@2024V2 Specifications are subject to change without further notification*Only available in Australia

HT40-18X(ND)-F-310W/315W/320W/325W/330W

Electrical Characteristics (STC)

Module Type	HT40-18X(ND)-F				
Maximum Power(Pmax)	310W	315W	320W	325W	330W
Open Circuit Voltage(Voc)	27.8V	28.0V	28.1V	28.2V	28.4V
Short Circuit Current(Isc)	14.16A	14.26A	14.42A	14.58A	14.68A
Maximum Power Voltage(Vmp)	23.2V	23.4V	23.5V	23.6V	23.8V
Maximum Power Current(Imp)	13.37A	13.47A	13.63A	13.79A	13.88A
Module Efficiency	12.0%	12.2%	12.4%	12.6%	12.8%
Power/Voc/Isc Measurement Tolerances	±3%/±5%/±5%				
Maximum System Voltage	1500V DC(IEC)				
Maximum Series Fuse Rating	30A				
Operating Temperature	-40°C to +85°C				

* STC: AM 1.5, Irradiance 1000W/m², module temperature 25°C

Electrical Characteristics (NMOT)

Module Type	HT40-18X(ND)-F				
Maximum Power(Pmax)	236W	240W	243W	247W	251W
Open Circuit Voltage(Voc)	26.7V	26.9V	27.0V	27.1V	27.3V
Short Circuit Current(Isc)	11.41A	11.49A	11.62A	11.75A	11.83A
Maximum Power Voltage(Vmp)	22.3V	22.5V	22.6V	22.7V	22.8V
Maximum Power Current(Imp)	10.58A	10.67A	10.75A	10.88A	11.01A

* NMOT: Irradiance 800W/m², ambient temperature 20°C, wind speed 1m/s

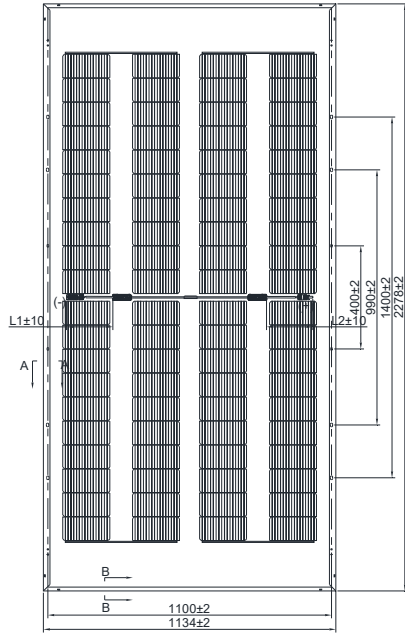
Bifacial output-rearside power gain

5%	Maximum Power(Pmax)	326W	331W	336W	341W	347W
	Module Efficiency	12.6%	12.8%	13.0%	13.2%	13.4%
15%	Maximum Power(Pmax)	357W	362W	368W	374W	380W
	Module Efficiency	13.8%	14.0%	14.2%	14.5%	14.7%
25%	Maximum Power(Pmax)	388W	394W	400W	406W	413W
	Module Efficiency	15.0%	15.2%	15.5%	15.7%	16.0%

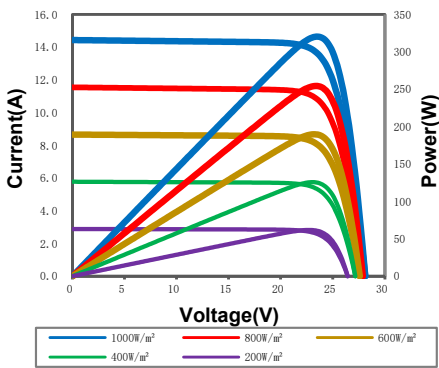
Bifaciality coefficient

φVoc	98 (±5) %
φIsc	80 (±5) %
φPmax	80 (±5) %

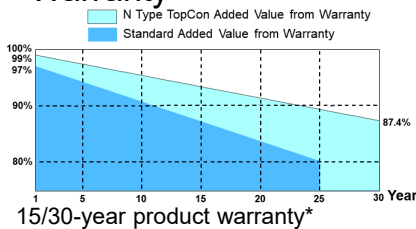
Solar Cells	Monocrystalline
No. of Cells	80 (4×20)
Dimensions	2278×1134×30mm
Weight	32.5(±0.5)kg
Glass (Front /Back)	High transmission coated tempered glass/Heat strengthened glass
Frame	Anodized aluminum alloy
Junction Box/Connectors	IP68/PV-HT005-1 Shanghai Aerospace Automobile Electromechanical Co., Ltd.
Cable	4mm ² (IEC) Length: (+) 400mm, (-) 300mm or customized
Fire Rating	Class C
Packaging Configuration	36 pcs/box: 720 pcs/ 40' HQ Container



IV Curves



Warranty



15/30-year product warranty*

30-year warranty on power output*

* Specific information is referred to the product quality guarantee

*The module recycling should be carried out by the professional institutions at the end of module life cycle

*Copyright@2024V2 Specifications are subject to change without further notification*Only available in Australia